

C400

SERIES

MX 





Watch the video

C400

SERIES

**TAILORED TO EVERY NEED
AND EVERY BUDGET**

MX is proud to introduce a new generation of compact loaders designed to meet a variety of needs and budgets. The C400 range embodies the engineering expertise MX has developed since 1951, offering robustness, maneuverability, and user-friendliness.

The C400 range features two specification levels : the C400, which is designed for simple , functional, and efficient use, and the C400 PRO tailored for intensive use, providing enhanced comfort, protection, and durability.

With 11 models compatible with tractors ranging from 15 to 70 horsepower , the C400 range offers a variety of enhanced equipment options—either standard or optional. This ensures that users can find reliable, high-performance solutions that are accessible and meet their specific requirements.

Enjoy looking through the range







C400

C400 PRO

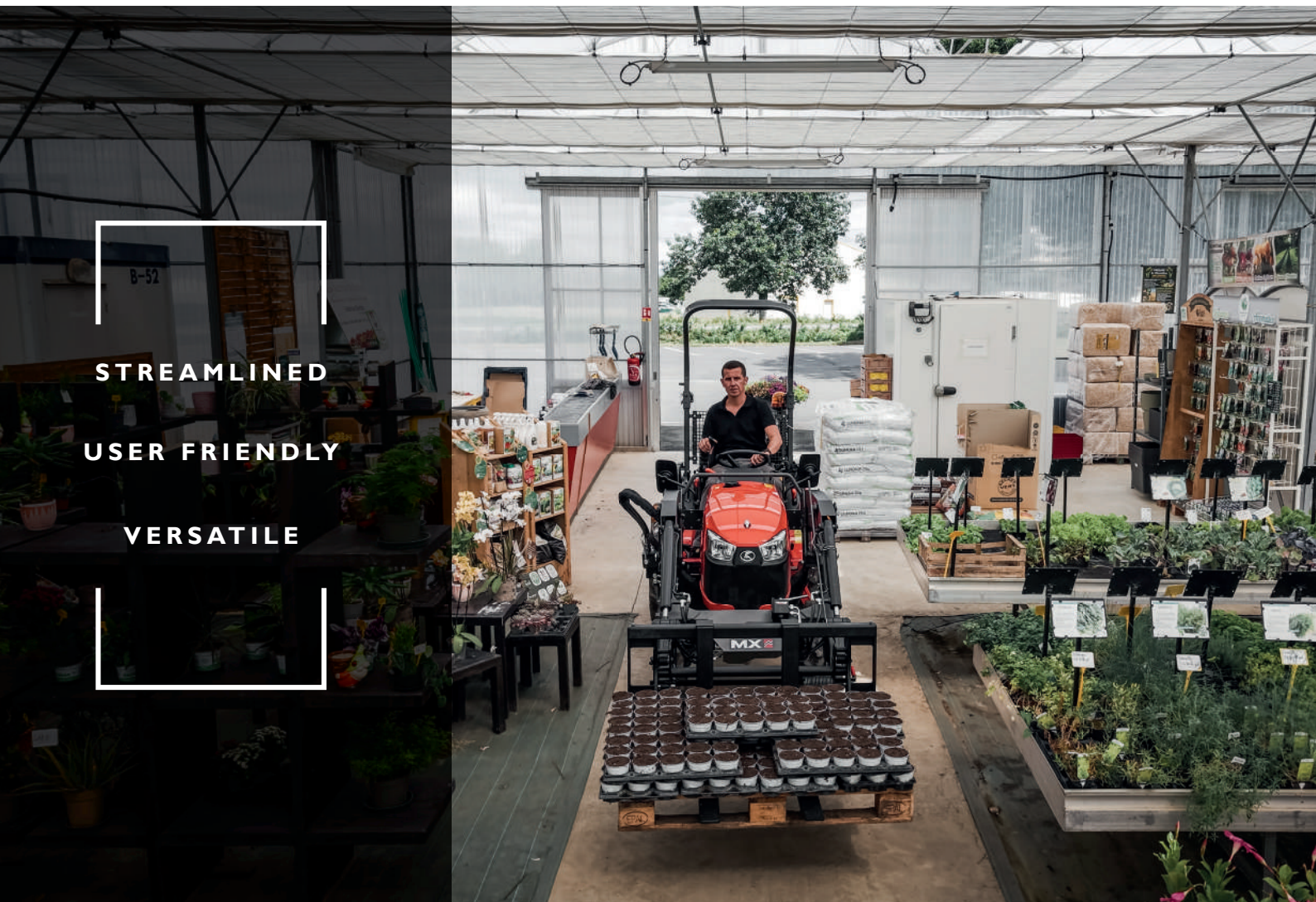
Focus on the C400 Series

EXPLORE THE C400 SERIES OF LOADERS, DESIGNED
TO CATER TO ALL NEEDS AND BUDGETS.

- Features at a glance  06-13
- Loader equipment and controls  14-15
- Compatible implements  16-17
- Performance Overview  18-19

Focus on the **features** of the **C400** range

▶ **A SOLUTION FOR EVERY REQUIREMENT**





STREAMLINED

USER FRIENDLY

VERSATILE

BOTH THE STANDARD AND PRO VERSIONS OF THE C400 LOADER HAVE BEEN DESIGNED FOR VARIOUS APPLICATIONS AND BUDGETS

-  **C400:** designed for everyday use
-  **C400 PRO:** designed for demanding use

How to choose your loader

I WANT TO	FOR EXAMPLE	USE	C400	C400 PRO
Move/Load	<ul style="list-style-type: none"> - pallets - sacks - manure, compost, grain, , earth - feed bales 	Light	✓	✓
		Moderate	✓	✓
		Regular	✓	✓
		Intensive		✓
Level	<ul style="list-style-type: none"> - sand - earth 	Light	✓	✓
		Moderate	✓	✓
		Regular		✓
		Intensive		
Push	<ul style="list-style-type: none"> - sand - earth - snow 	Light	✓	✓
		Moderate		✓
		Regular		
		Intensive		
Landscape	<ul style="list-style-type: none"> - dig - fill 	Light		✓
		Moderate		
		Regular		
		Intensive		
Key: ✓: recommended loader		Estimated loader hours <i>(indicative and non-contractual data)</i>	< 150 hrs/year	> 150 hrs/year

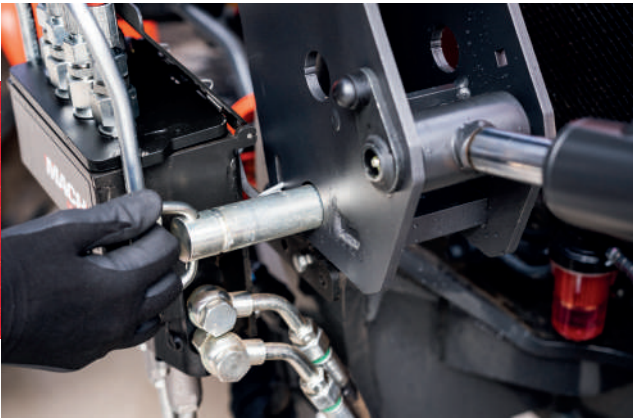
▶ STYLISH DESIGN, FULLY INTEGRATED WITH THE TRACTORS PROFILE

Thanks to its modern curved profile



▶ **EVERYDAY EASE-OF-USE**

- Simple hitching/unhitching of the loader (*pin locking, parking position*)
- Easy implement hitching/unhitching with multiple carrier variants available ; COMPACT / Euro / Skid-Steer
- Clear access to grease nipples allows easy maintenance



Watch the video on hitching and unhitching the loader

▶ **PROTECTED HYDRAULIC CIRCUIT**

Hydraulic lines are integrated into the loaders structure to minimize accidental damage. Furthermore, a protective sheath enhances the durability of external hoses.



PRO VERSION

- Experience optimal visibility with the exclusive design of the CLEAR LINK System mechanical parallelogram
- Enjoy increased durability thanks to wear-bush protection at the pivot points
- Safety features include a pressure limiter that safeguards the loader during scraping maneuvers, and additionally ensures easy use by allowing combined loader movements.
- The PRO version comes with a implement carrier as standard



BENEFITS +

STANDARD VERSION: A COST-EFFECTIVE SOLUTION

- Direct hitching of implement to loader (for versions without parallelogram and up to and including model C405).
- Optional implement carrier for easier implement changes (standard on C407)

▶ THE IMPLEMENT HITCH THAT SUITS YOU BEST



Loader equipment and controls

▶ LOADER EQUIPMENT



3rd FUNCTION

Required for implements using hydraulic power



EXCLUSIVE MX

MACH 2

Instant loader/implement connection



EXCLUSIVE MX

MACH SYSTEM COMPACT

Easy and safe connection of hydraulic hoses and electric connectors from loader to tractor



SHOCK ELIMINATOR

Improved ride and comfort



LIFTING/DUMPING SAFETY DEVICE

To protect people around the load



CUSTOMISED COLOURS

Specific loader colour
Exclusive MX Graphite Grey colour on the PRO version



C403 + BRC R

▶ **MX CONTROLS**

MX controls offer an alternative to using the original control valve



MX DIRECT CONTROL

Direct 2-axis mono-lever with floating position, integrated control valve for easy installation, 3/8" ISO-A connection, and integrated 3rd function button on the handle.

(only available on STANDARD version)



C400 handle



C400 PRO handle

MX CABLED CONTROL

2-axis cable mono-lever with double-action cable control, maintained floating position, hydraulic connection on control valve with 3/8" ISO-A couplers and integrated 3rd function button on the handle.

PRO version: exclusive MX handle for maximum comfort



MX E-PILOT S ELECTRONIC CONTROL

Compact and ergonomic joystick, precise and responsive electronic control, quick connection via MACH System with a single CAN electrical cable.

(only available on the PRO version)

Implements, linkages & weights



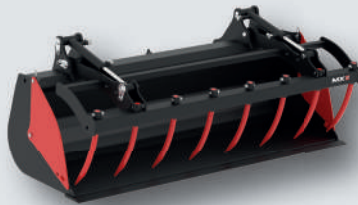
GENERAL PURPOSE BUCKET

3 ranges and 10 models

Width: 1.20 to 1.80 m
Capacity: 160 to 442 L

Suitable for loading gravel, sand, earth, bulk materials, etc.

⊕ *Simplicity*



MULTI-PURPOSE BUCKET

2 ranges and 6 models

Width: 1.20 to 1.75 m
Capacity: 250 to 451 L

Designed for loading bulk materials, feed and branches.

⊕ *Versatility*



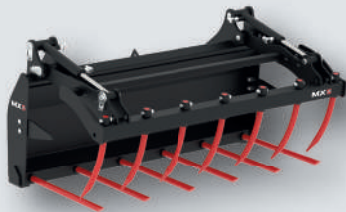
4-IN-1 BUCKET

2 ranges and 5 models

Width: 1.20 to 1.80 m
Capacity: 140 to 375 L

Suitable for soil work, levelling, and earthmoving.

⊕ *Efficiency*



MANURE FORK & COMBI-GRAB

2 ranges and 4 models

Width: 1.20 m
Capacity: 208 to 300 L

Designed for loading fibrous material.

⊕ *Performance*



PALLET FORK AND CARRIER

2 ranges and 2 models

Capacity: 500 to 800 kg

Used for moving pallets. Can be combined with load backplate or log grab.

⊕ *Safety*



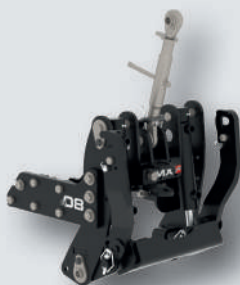
BALE SPIKE (MANUBAL)

1 model

Capacity: 500 kg

Designed for transporting straw or hay bales.

⊕ *Comfort*



FRONT LINKAGE

5 models

Lifting capacity: 400 to 800 kg
Category: 1N, 1

Used for hitching an implement or weight to the front of the tractor.

⊕ *Integration*



WEIGHTS (MULTIMASS XS)

3 models

Weight: 250 to 600 kg

Used for maintaining tractor/loader balance with minimal overhang.
Choice of colours ■ ■ ■ ■ ■

⊕ *Compact size*



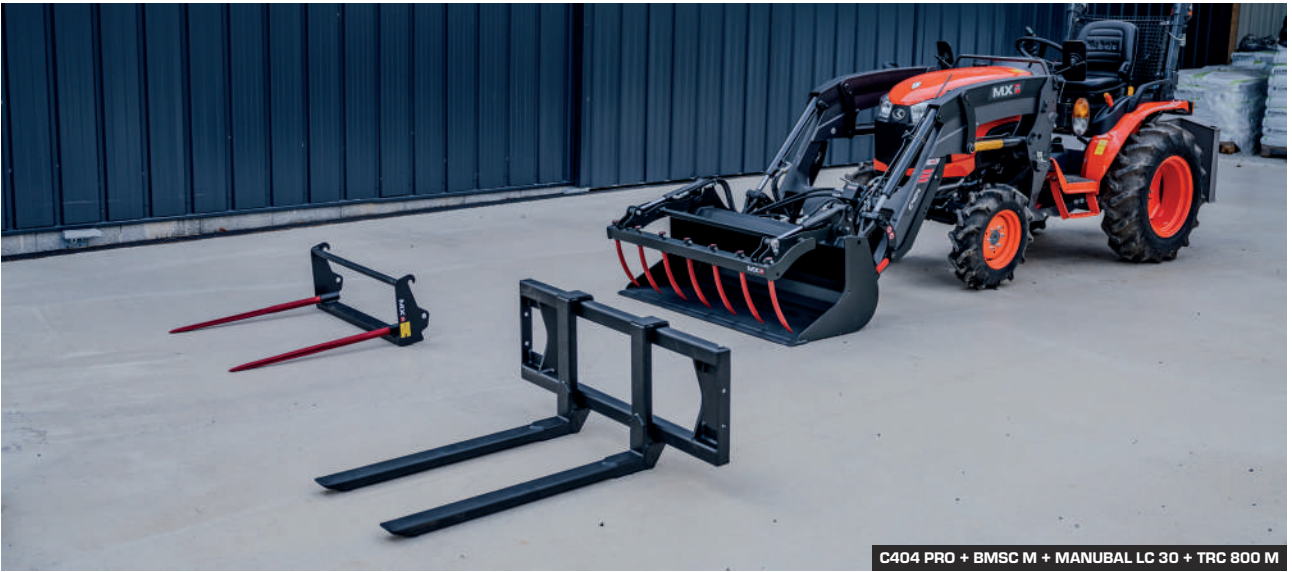
STORAGE BOX

2 models

Capacity: 100 or 150 L

TO be filled yourself, used for ballasting and/or storage space.

⊕ *Economical*



C404 PRO + BMSC M + MANUBAL LC 30 + TRC 800 M



C403 + BRC R



C404 PRO + BMSC M



C404 PRO + TRC 800 M

Overview of range performance

MODELS FROM 15 TO 70 HP

	C401	C402	C403	C405	C407
MECHANICAL PARALLELOGRAM	No	Yes	No	No	No
Tractor power (hp)	15 - 30	15 - 30	20 - 35	25 - 50	40 - 70
LIFTING HEIGHT (maximum at implement pivot)	1.92 m	1.90 m	2.20 m	2.50 m	2.80 m
HEIGHT UNDER HORIZONTAL BUCKET # ①	1.80 m	1.73 m	2.04 m	2.28 m	2.58 m
HEIGHT UNDER DUMPED BUCKET# ②	1.50 m	1.32 m	1.69 m	1.95 m	2.26 m
DUMP ANGLE AT MAX HEIGHT # ③	40°	50°	42°	36°	36°
CROWDING ANGLE AT GROUND LEVEL # ④	30°	42°	26°	25°	25°
DIGGING DEPTH# ⑤	10 cm	10 cm	10 cm	15 cm	15 cm
PAYLOAD IN THE IMPLEMENT* - at ground level	320 kg	355 kg	600 kg	720 kg	995 kg
PAYLOAD IN THE IMPLEMENT * - at max. height.	320 kg	310 kg	370 kg	505 kg	705 kg
LOADER WEIGHT (without equipment)	85 kg	167 kg	118 kg	141 kg	204 kg

The categories may vary depending on the type of tractor. Characteristics measured at:

- 140 bar pressure for MX C401/C402 models
- 160 bar pressure for MX C403/C403 PRO/C404 PRO/C405/C405 PRO/C406 PRO models
- 180 bar pressure for MX C407/C407 PRO/C408 PRO models

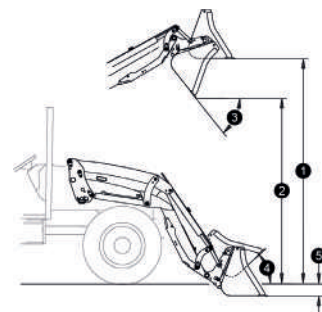
*The payload is calculated at 400 mm from the implement pivot, with the following implement:

- C401: BRC 118 R with pin hitch

Payload calculated with Euro implement carrier, 500 mm from implement pivot, with the following implement:

- C402: BRC 120 R with Euro hitch
- C403/C403 PRO/C404 PRO: BRC 140 R with Euro hitch
- C405/C405 PRO/C406 PRO: BRC 160 M with Euro hitch
- C407/C407 PRO/C408 PRO: BRC 180 M with Euro hitch

Measured with bucket (see details above)



C404 PRO + BMSC M



C407 + BQUC M



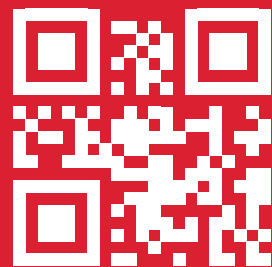
C403 PRO	C404 PRO	C405 PRO	C406 PRO	C407 PRO	C408 PRO
No	Yes	No	Yes	No	Yes
20 - 35	20 - 35	25 - 50	25 - 50	40 - 70	40 - 70
2.30 m	2.30 m	2.60 m	2.60 m	2.90 m	2.90 m
2.10 m	2.10 m	2.47 m	2.47 m	2.76 m	2.76 m
1.73 m	1.73 m	1.96 m	1.96 m	2.25 m	2.25 m
55°	55°	51°	51°	51°	51°
42°	42°	43°	43°	43°	43°
15 cm	15 cm	13 cm	13 cm	14 cm	14 cm
525 kg	660 kg	580 kg	690 kg	750 kg	895 kg
525 kg	660 kg	530 kg	690 kg	730 kg	895 kg
220 kg	245 kg	235 kg	255 kg	250 kg	290 kg



C401 + BMSC M



MX 
part of M-extend



www.m-x.eu

